

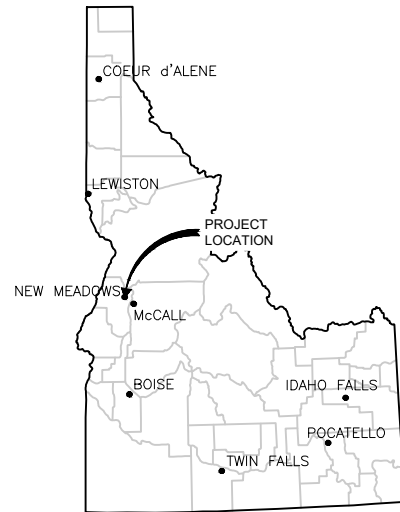
MEADOWS SUBDIVISION PHASE 1A

NEW MEADOWS, IDAHO

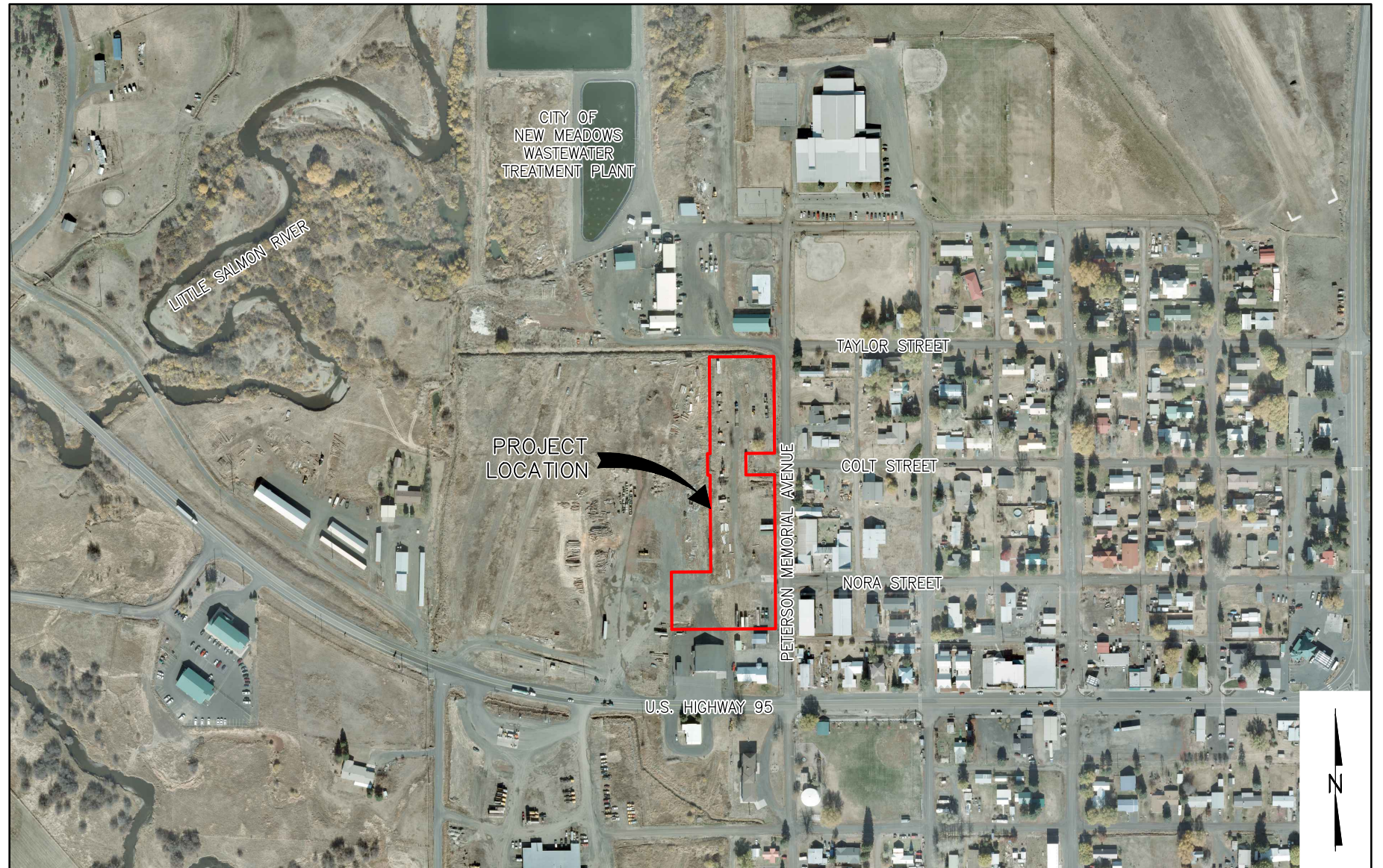
ROADWAY, SANITARY SEWER, DOMESTIC WATER, GRADING, DRAINAGE, AND STORMWATER IMPROVEMENTS FALL 2024

DRAWING INDEX

1	G-1	COVER SHEET
2	G-2	GENERAL INFORMATION AND NOTES
3	C-1	OVERALL LAYOUT
4	C-2	NORA STREET AND COLT STREET ROAD PLAN AND PROFILE
5	C-3	RAILROAD STREET ROAD PLAN AND PROFILE
6	C-4	RAILROAD STREET AND COLT STREET SANITARY SEWER PLAN AND PROFILE
7	C-5	NORA STREET AND COLT STREET DOMESTIC WATER PLAN AND PROFILE
8	C-6	GRADING, DRAINAGE AND STORMWATER MANAGEMENT PLAN - 1
9	C-7	GRADING, DRAINAGE AND STORMWATER MANAGEMENT PLAN - 2
10	C-8	SIGNAGE, STRIPING, PEDESTRIAN IMPROVEMENTS, AND LIGHTING PLAN -1
11	C-9	SIGNAGE, STRIPING, PEDESTRIAN IMPROVEMENTS, AND LIGHTING PLAN -2
12	GC-1	CIVIL TYPICAL DETAILS - 1
13	GC-2	CIVIL TYPICAL DETAILS - 2
14	GC-3	CIVIL TYPICAL DETAILS - 3
15	GC-4	CIVIL TYPICAL DETAILS - 4
16	GC-5	CIVIL TYPICAL DETAILS - 5



LOCATION MAP
NOT TO SCALE



VICINITY MAP
SCALE 1" = 200'

Path: \\1001\RSAC\ConstructionManagement\24001\Civil\DWG\CD\24001_G-1_CoverSheet.dwg File Name: 24001_G-1_CoverSheet.dwg Plot Date: 9/5/2024 6:47 PM ipair

NO.	REVISION	BY	DATE	DESIGN
1.	CITY OF NEW MEADOWS FINAL ENGINEERING SUBMITTAL.	RFP	9/5/2024	RFP
				DRAWN
				RFP
				CHECKED
				AMD
				APPROVED
				GTT



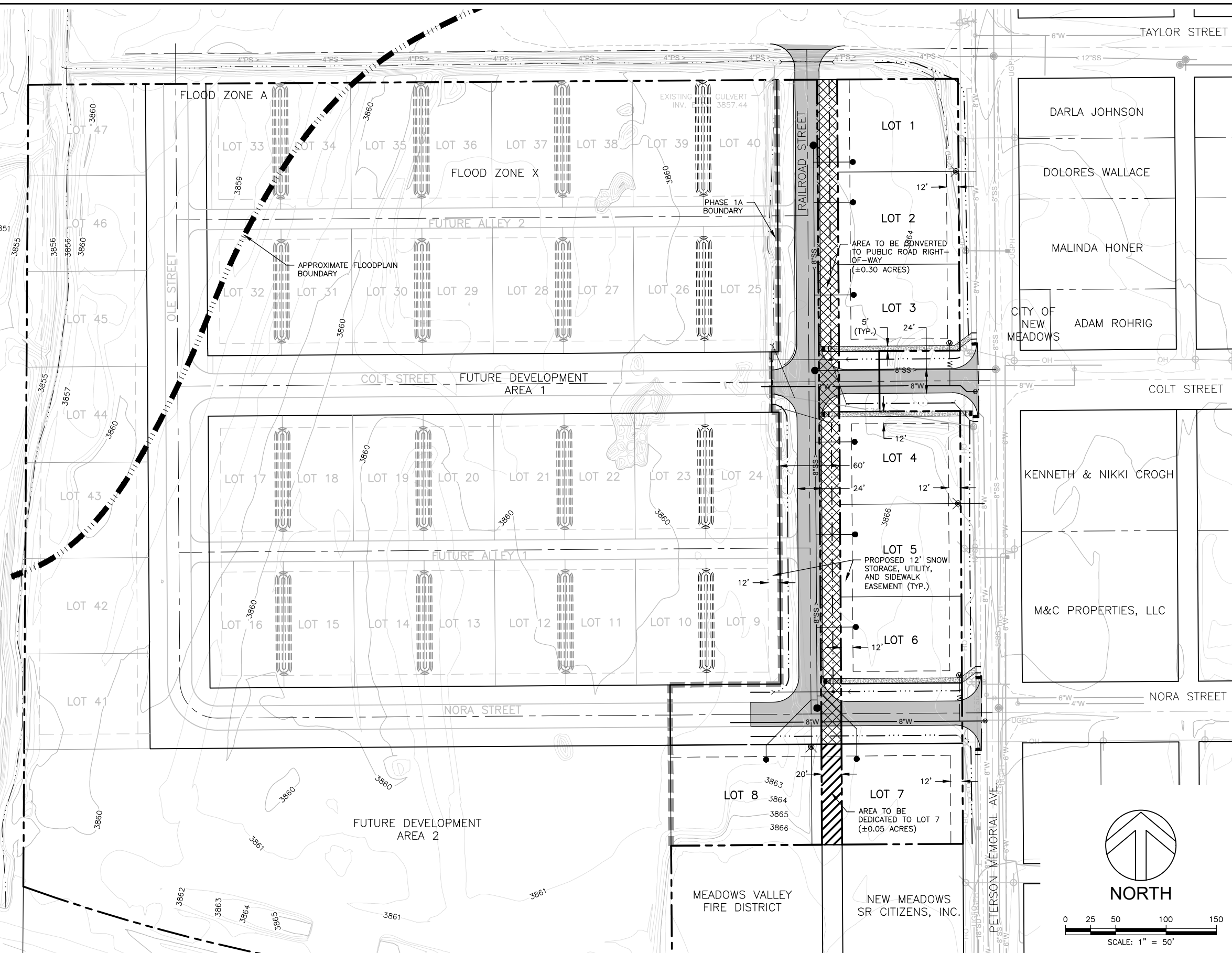
CRESTLINE
ENGINEERS
323 DEINHARD LANE, SUITE C · PO BOX 2330
McCALL, IDAHO 83638
208.634.4140 · 208.634.4146 FAX

MEADOWS SUBDIVISION PHASE 1A
NEW MEADOWS, IDAHO
ROADWAY, SANITARY SEWER, DOMESTIC WATER, GRADING,
DRAINAGE, AND STORMWATER IMPROVEMENTS
COVER SHEET

VERIFY SCALE	
BAR IS ONE INCH ON FULL SIZE DRAWING	
PROJECT	24001
DATE	9/5/2024
DRAWING NO.	SHEET NO.
G-1	1 OF 16

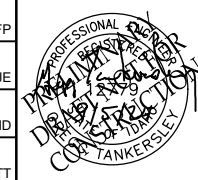
NOTES:

1. REFER TO DRAWING G-2, SHEET 2 FOR PROJECT NOTES, LEGEND AND SYMBOLS.
2. ALL FUTURE IMPROVEMENTS SHOWN ON THIS PLAN ARE CONCEPTUAL. ANY FUTURE IMPROVEMENTS WILL BE SUBMITTED AND APPROVED BY CITY OF NEW MEADOWS AND/OR OTHER APPROPRIATE REGULATORY AGENCY PRIOR TO THE START OF ANY CONSTRUCTION.



Path: \\1001\RRAC\ConstructionManagement\24001\Civil\Drawings\24001_C-1_OverallLayout.dwg File Name: 24001_C-1_OverallLayout.dwg Plot Date: 9/5/2024 6:49 PM Admin

NO.	REVISION	BY	DATE	DESIGN
1.	CITY OF NEW MEADOWS FINAL ENGINEERING SUBMITTAL.	RFP	9/5/2024	RFP
				DRAWN LJE
				CHECKED AMD
				APPROVED GTT

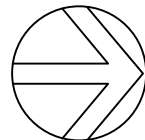


CRESTLINE ENGINEERS
 323 DEINHARD LANE, SUITE C · PO BOX 2330
 McCALL, IDAHO 83638
 208.634.4140 · 208.634.4146 FAX

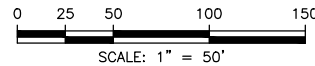
MEADOWS SUBDIVISION PHASE 1A
NEW MEADOWS, IDAHO

ROADWAY, SANITARY SEWER, DOMESTIC WATER, GRADING,
 DRAINAGE, AND STORMWATER IMPROVEMENTS
 OVERALL LAYOUT

VERIFY SCALE BAR IS ONE INCH ON FULL SIZE DRAWING	
PROJECT	24001
DATE	9/5/2024
DRAWING NO.	SHEET NO.
C-1	3 OF 16



NORTH



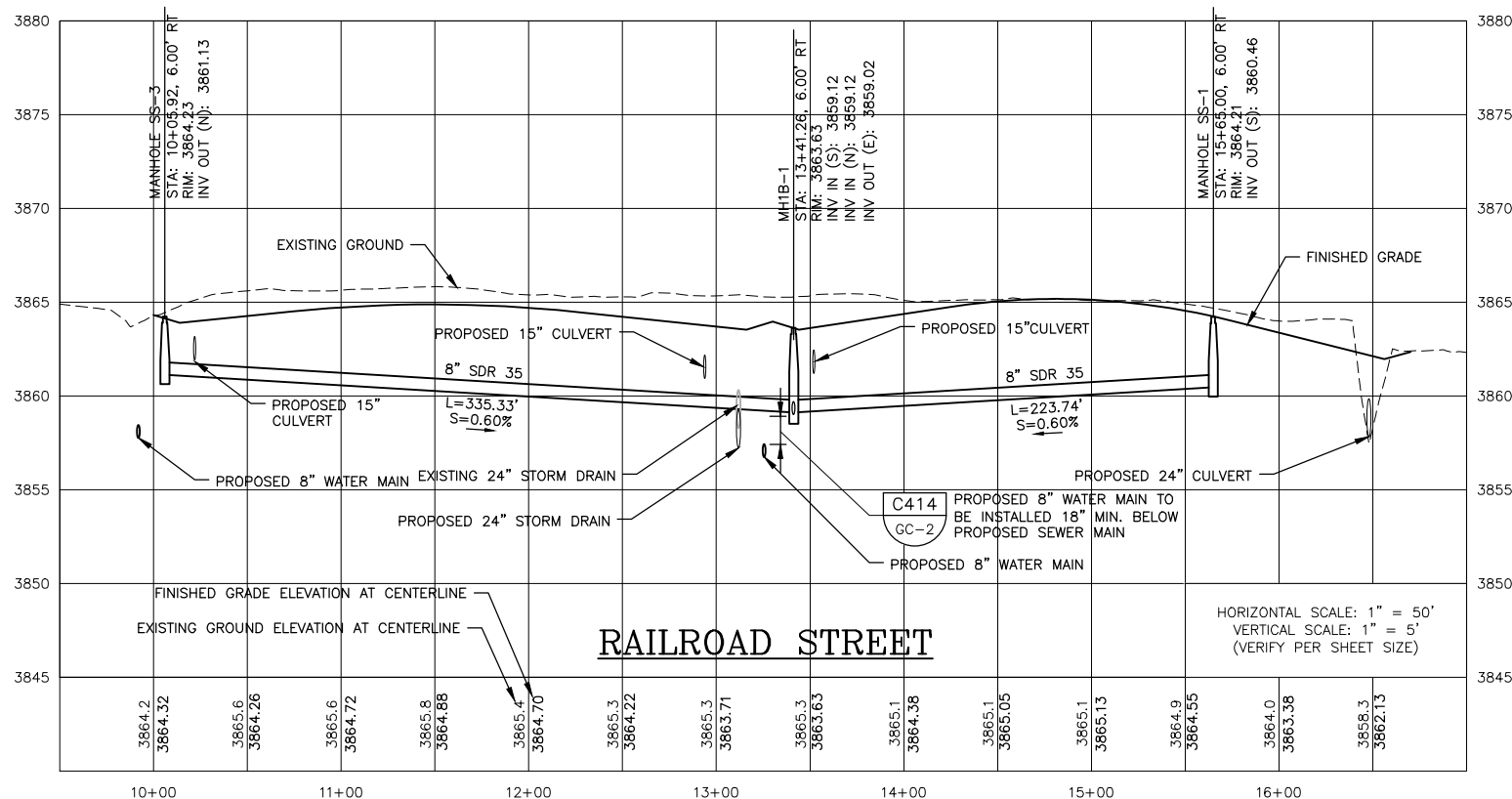
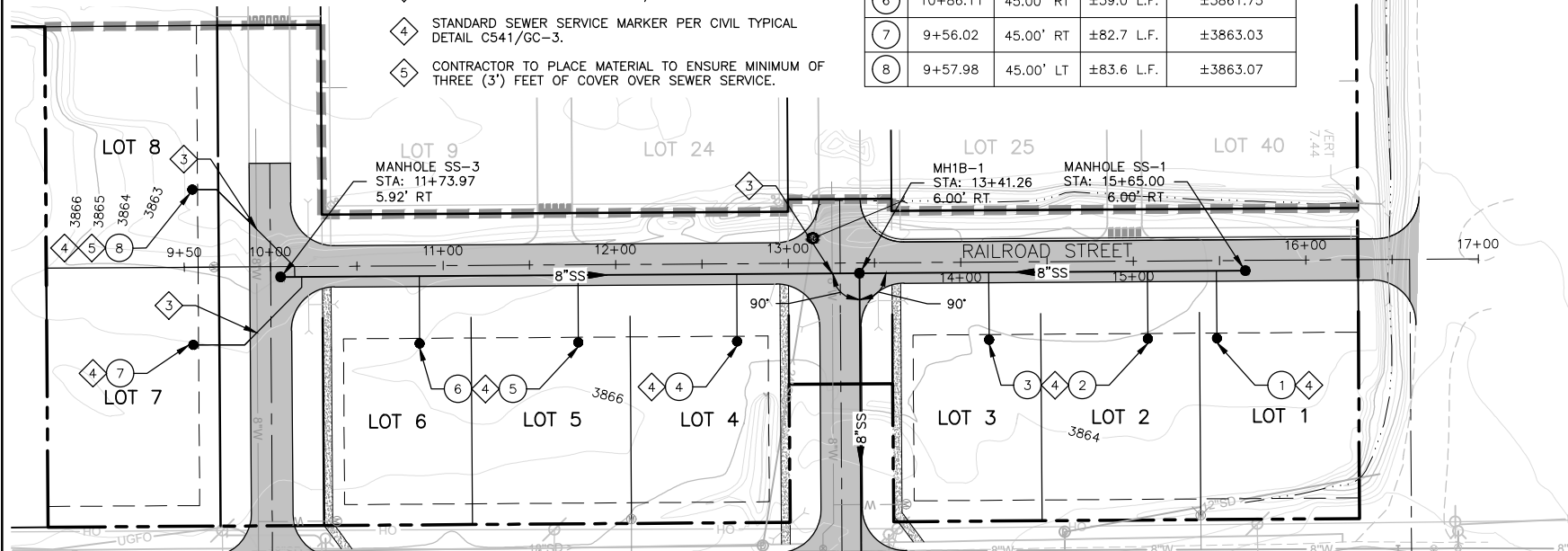
NOTES:

1. REFER TO DRAWING G-2, SHEET 2 FOR PROJECT NOTES, LEGEND AND SYMBOLS.

KEY NOTES:

- 1 POTHOLE AND VERIFY DEPTH/LOCATION OF EXISTING SEWER MAIN PRIOR TO START OF CONSTRUCTION. REPORT ANY DISCREPANCIES TO THE PROJECT ENGINEER.
- 2 CORE DRILL EXISTING MANHOLE AND SHAPE MANHOLE FLOWLINE. USE KOR-N-SEAL FLEXIBLE CONNECTION ON NEW PIPE.
- 3 MAINTAIN POTABLE/NON-POTABLE VERTICAL SEPARATION PER CIVIL TYPICAL DETAIL C414/GC-2.
- 4 STANDARD SEWER SERVICE MARKER PER CIVIL TYPICAL DETAIL C541/GC-3.
- 5 CONTRACTOR TO PLACE MATERIAL TO ENSURE MINIMUM OF THREE (3') FEET OF COVER OVER SEWER SERVICE.

SEWER SERVICE CLEAN OUT TABLE				
NO.	STATION	OFFSET	LENGTH	INVERT ELEVATION
1	15+68.20	45.00' RT	±39.0 L.F.	±3861.46
2	15+08.20	45.00' RT	±39.0 L.F.	±3861.22
3	14+16.20	45.00' RT	±39.0 L.F.	±3860.67
4	12+70.11	45.00' RT	±39.0 L.F.	±3860.65
5	11+78.11	45.00' RT	±39.0 L.F.	±3861.20
6	10+86.11	45.00' RT	±39.0 L.F.	±3861.75
7	9+56.02	45.00' RT	±82.7 L.F.	±3863.03
8	9+57.98	45.00' LT	±83.6 L.F.	±3863.07



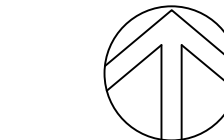
NOTES:

1. REFER TO DRAWING G-2, SHEET 2 FOR PROJECT NOTES, LEGEND AND SYMBOLS.

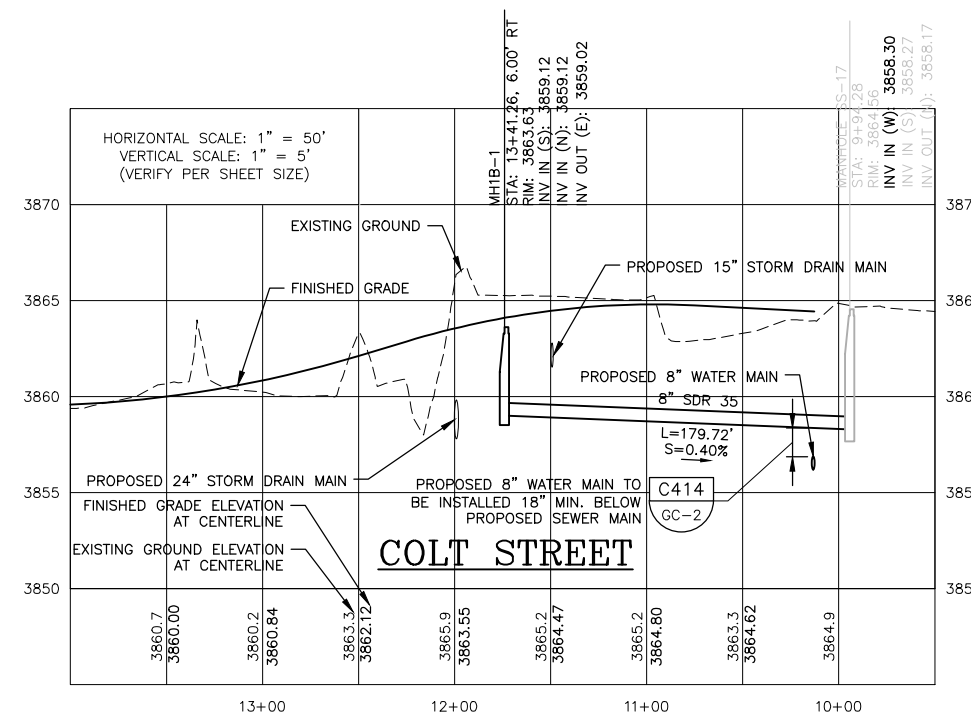
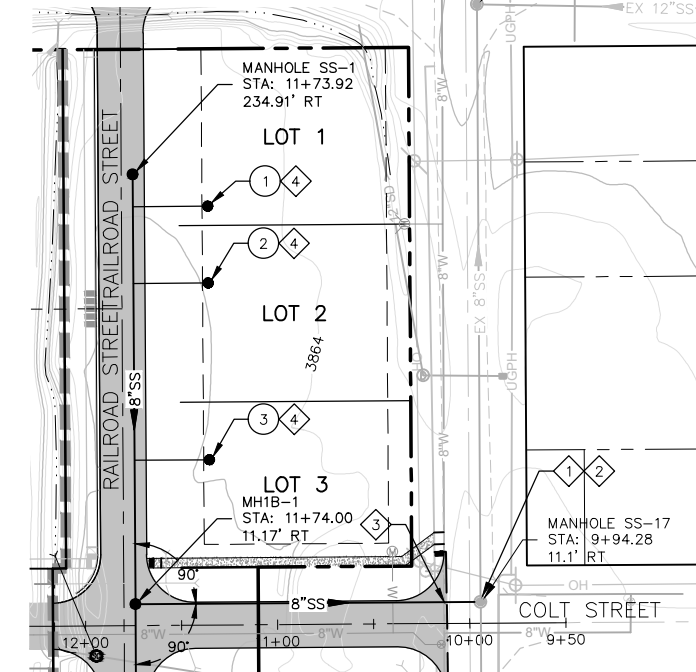
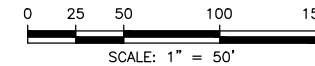
KEY NOTES:

- 1 POTHOLE AND VERIFY DEPTH/LOCATION OF EXISTING SEWER MAIN PRIOR TO START OF CONSTRUCTION. REPORT ANY DISCREPANCIES TO THE PROJECT ENGINEER.
- 2 CORE DRILL EXISTING MANHOLE AND SHAPE MANHOLE FLOWLINE. USE KOR-N-SEAL FLEXIBLE CONNECTION ON NEW PIPE.
- 3 MAINTAIN POTABLE/NON-POTABLE VERTICAL SEPARATION PER CIVIL TYPICAL DETAIL C414/GC-2.
- 4 STANDARD SEWER SERVICE MARKER PER CIVIL TYPICAL DETAIL C541/GC-3.

SEWER SERVICE CLEAN OUT TABLE				
NO.	STATION	OFFSET	LENGTH	INVERT ELEVATION
1	15+68.20	45.00' RT	±39.0 L.F.	±3861.46
2	15+08.20	45.00' RT	±39.0 L.F.	±3861.22
3	14+16.20	45.00' RT	±39.0 L.F.	±3860.67



NORTH



NO.	REVISION	BY	DATE	DESIGN
1.	CITY OF NEW MEADOWS FINAL ENGINEERING SUBMITTAL.	RFP	9/5/2024	RFP
				DRAWN SMR
				CHECKED AMD
				APPROVED GTT



CRESTLINE ENGINEERS
 323 DEINHARD LANE, SUITE C · PO BOX 2330
 McCALL, IDAHO 83638
 208.634.4140 · 208.634.4146 FAX

MEADOWS SUBDIVISION PHASE 1A
 NEW MEADOWS, IDAHO
 ROADWAY, SANITARY SEWER, DOMESTIC WATER, GRADING,
 DRAINAGE, AND STORMWATER IMPROVEMENTS
 RAILROAD STREET AND COLT STREET SANITARY SEWER PLAN AND PROFILE

VERIFY SCALE	
BAR IS ONE INCH ON FULL SIZE DRAWING	
PROJECT	24001
DATE	9/5/2024
DRAWING NO.	C-4
SHEET NO.	6 OF 16

Path: M:\01\19\19\CA\ConstructionManagement\24001\Civil\DWG\C24001_C-4_Sewer.dwg File Name: 24001_C-4_Sewer.dwg Plot Date: 9/5/2024 8:57 PM rpf

NOTES:

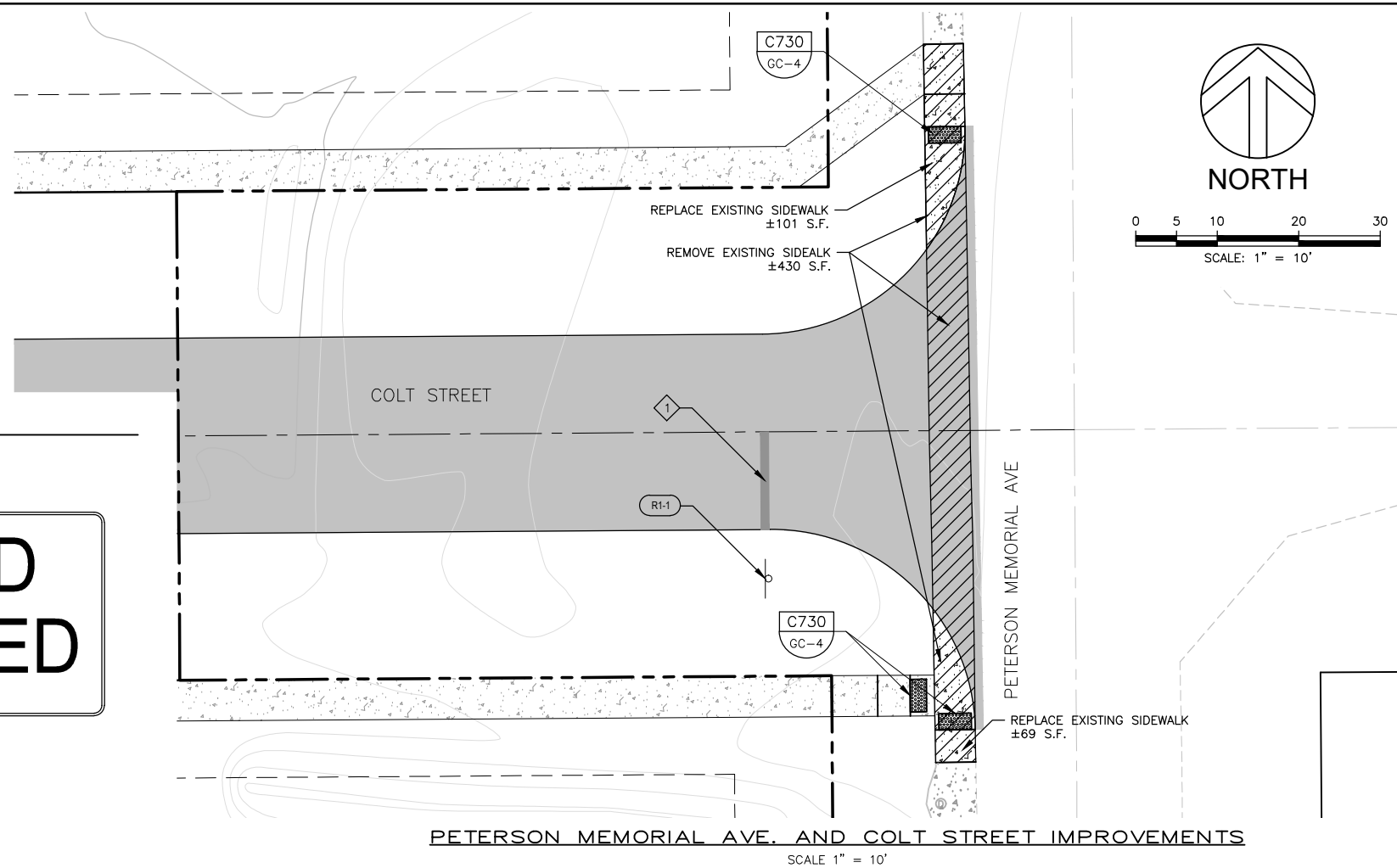
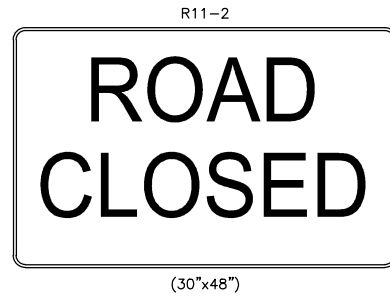
1. REFER TO DRAWING G-2, SHEET 2 FOR ALL PROJECT NOTES, LEGEND AND SYMBOLS.
2. ALL SIGNS AND STRIPING TO BE IN CONFORMANCE WITH THE MANUAL ON UNIFORM TRAFFIC CONTROL DEVICES (MUTCD).
3. ALL SIGNS TO BE INSTALLED PER ISPWC SD-1130.
4. ANY ADDITIONAL SIGNS TO BE COORDINATED WITH THE OWNER.

KEY NOTES:

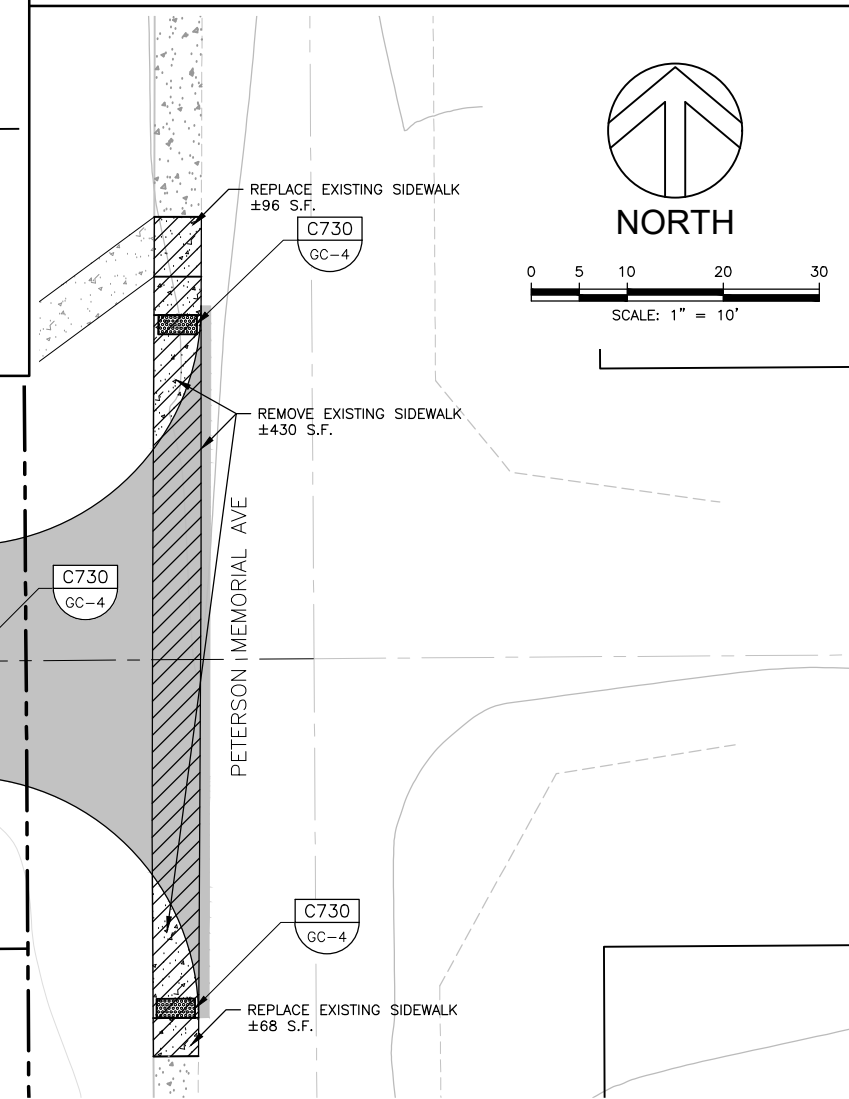
- 1 12" WIDE SOLID WHITE STOP BAR PAVEMENT MARKINGS PER MUTCD SECTION 3B.04.
- 2 INSTALL TERMINUS BARRICADE PER ISPWC STANDARD DRAWING SD-1132. REPLACE BARRICADE POSTS WITH TELSAR BREAKAWAY STYLE POSTS AND ATTACH ROAD CLOSED SIGN TO HORIZONTAL PLANKS.
- 3 24" WIDE SOLID WHITE CROSSWALK PAVEMENT MARKING PER MUTCD SECTION 3B.04

SIGN LEGEND:

R1-1 CALLOUT NUMBERS COORDINATE TO SIGNS BELOW.



PETERSON MEMORIAL AVE. AND COLT STREET IMPROVEMENTS
SCALE 1" = 10'



PETERSON MEMORIAL AVE. AND NORA STREET IMPROVEMENTS
SCALE 1" = 10'

Path: \\1001R\RA\ConstructionManagement\24001\Civil\DWG\CD\24001_C-9_SignageStripingLighting.dwg File Name: 24001_C-9_SignageStripingLighting.dwg Plot Date: 9/5/2024 10:18 PM rpar

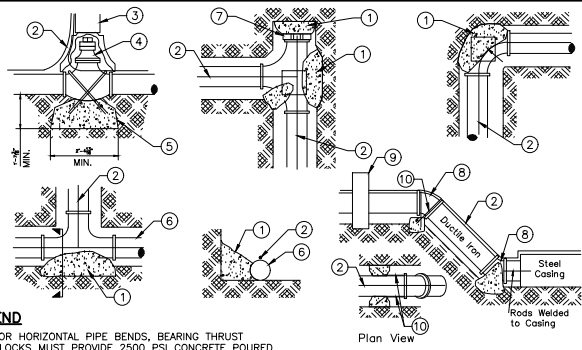
NO.	REVISION	BY	DATE	DESIGN
1.	CITY OF NEW MEADOWS FINAL ENGINEERING SUBMITTAL.	RFP	9/5/2024	RFP
				DRAWN
				RFP
				CHECKED
				AMD
				APPROVED
				GTT



CRESTLINE ENGINEERS
 323 DEINHARD LANE, SUITE C · PO BOX 2330
 McCALL, IDAHO 83638
 208.634.4140 · 208.634.4146 FAX

MEADOWS SUBDIVISION PHASE 1A
 NEW MEADOWS, IDAHO
 ROADWAY, SANITARY SEWER, DOMESTIC WATER, GRADING,
 DRAINAGE, AND STORMWATER IMPROVEMENTS
 SIGNAGE, STRIPING, PEDESTRIAN IMPROVEMENTS, AND LIGHTING PLAN - 2

VERIFY SCALE	
BAR IS ONE INCH ON FULL SIZE DRAWING	
PROJECT	24001
DATE	9/5/2024
DRAWING NO.	SHEET NO.
C-9	11 OF 16



- LEGEND**
- 1 FOR HORIZONTAL PIPE BENDS, BEARING THRUST BLOCKS MUST PROVIDE 2500 PSI CONCRETE POURED AGAINST UNDISTURBED EARTH PER TABLE 1.
 - 2 NO. 12 COPPER FINDER WIRE.
 - 3 C.I. VALVE BOX WITH COVER
 - 4 C.I. GATE VALVE
 - 5 PRECAST BLOCK FOR CUT IN TEE AND VALVE OR CAST IN PLACE WITH (2) 1/2" MIN. REBAR.
 - 6 PIPE
 - 7 PLUG
 - 8 RESTRAINED JOINTS
 - 9 HAMMERHEAD THRUST BLOCKING
 - 10 ANCHOR RODS (1/2" MIN.) TABLE 1 THRUST AREA FOR HORIZONTAL BENDS***

SOIL BEARING PRESSURE = 2,000 PSF
WORKING PRESSURE RATING = 150 PSI
SAFETY FACTOR = 1.5

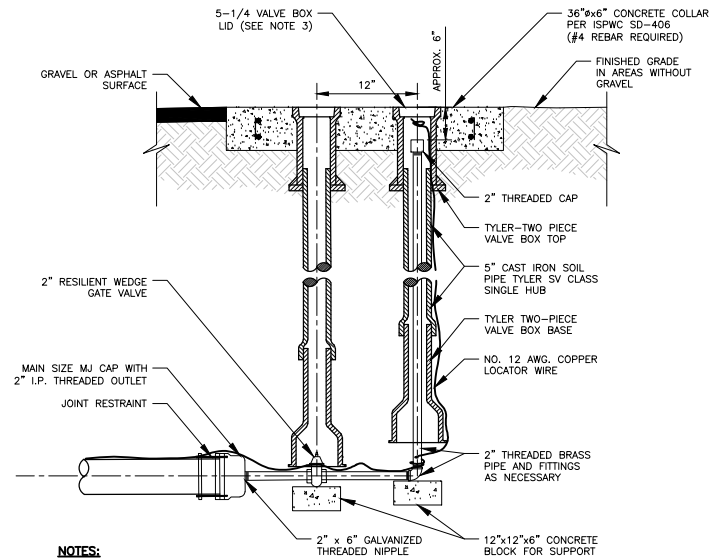
MINIMUM SQUARE FEET OF THRUST BLOCK AREA ONTO UNDISTURBED EARTH*

PIPE SIZE	TEE OR BENDS**	22 1/2" BENDS OR REDUCER	11 1/4" BENDS OR REDUCER
3"	0.8	1.1	0.6
4"	1.4	2.0	1.1
6"	3.2	4.5	2.4
8"	5.7	8.0	4.3
10"	8.8	12.5	6.8
12"	12.7	18.0	9.7
14"	17.3	24.5	13.3
16"	22.6	32.0	17.3
18"	28.6	40.5	21.9

* MUST BE INCREASED BASED ON DIFFERENT CONDITIONS (HIGHER WORKING PRESSURE OR LOWER SOIL BEARING STRENGTH)
** OR TEE ACTING AS A 90° BEND
*** THRUST BLOCK DEPTH TO BE A MINIMUM OF 12" FOR PIPE SIZES 3"-8" AND 18" FOR PIPE SIZES 10"-18" OR THE SQUARE ROUTE OF THE REQUIRED BEARING AREA, WHICHEVER IS GREATER.

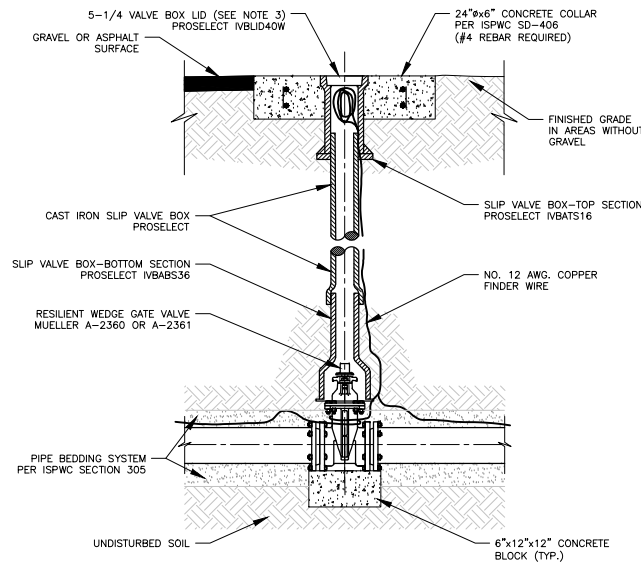
- GENERAL NOTES:**
1. ANCHOR ALL BURIED VALVES AS SHOWN.
 2. WRAP BOLTS AND FLANGES WITH 6 MIL. POLYPROPYLENE TO PROTECT FROM CONCRETE ADHERENCE DURING CONSTRUCTION OF THRUST BLOCKS.
 3. SEE CHART FOR MINIMUM THRUST BLOCKS BEARING AREAS.
 4. ALL CONCRETE SHALL BE MIN. OF 6 CU. FT. AND HAVE A MIN. TWENTY-EIGHT(28) DAY COMPRESSIVE STRENGTH OF NOT LESS THAN 2500 PSI POURED AGAINST UNDISTURBED EARTH.
 5. THRUST BLOCKING SHALL BE PLACED BETWEEN UNDISTURBED EARTH AND THE FITTING TO BE ANCHORED.
 6. THRUST BLOCKING SHALL BE PLACED SO THAT THE PIPE AND FITTING JOINTS WILL BE ACCESSIBLE TO REPAIRS.
 7. ALL FITTINGS SHALL HAVE A 12"x12"x4" CONCRETE SUPPORT BLOCK.
 8. ALL THRUST BLOCKS CAST IN PLACE UNLESS OTHERWISE NOTED.
 9. PROVIDE 6 MIL. POLYPROPYLENE BETWEEN FITTINGS AND CONCRETE.
 10. NOTIFY ENGINEER FOR ANY CONDITION OR PIPE SIZE NOT INDICATED.
 11. ISPEC SD-403 APPLIES WHERE MORE STRINGENT.

C406 THRUST BLOCKS
TYP NOT TO SCALE



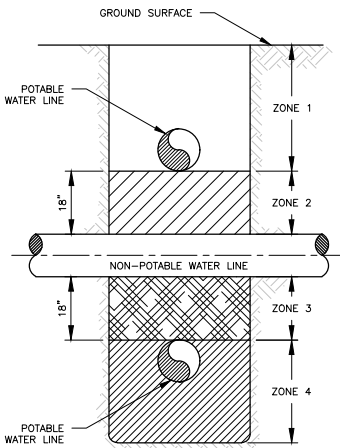
- NOTES:**
1. ALL GATE VALVES SHALL BE RESILIENT SEATED GATE VALVES MEETING ANSI/AWWA C509 FOR WATER SUPPLY SERVICE.
 2. ALL VALVE BOX LIDS TO BE 5 1/4" DROP LIDS. ALL POTABLE WATER VALVE BOX LIDS TO BE STAMPED "WATER", ALL FIRE VALVE BOX LIDS TO BE STAMPED "FIRE" AND ALL NON-POTABLE VALVE BOX LIDS TO BE STAMPED "SEWER".
 3. FOR ASPHALT SURFACE, CONCRETE COLLAR TO BE 1/4" BELOW FINISHED GRADE.
 4. FOR GRAVEL SURFACE, CONCRETE COLLAR TO BE 4" BELOW FINISHED GRADE AND SLOPED AWAY FROM VALVE BOX LID SO THAT OUTSIDE EDGE IS 1" LOWER.
 5. VALVE BOXES OUTSIDE OF PAVED OR GRAVEL ROADWAYS SHALL HAVE A CONCRETE COLLAR POURED TO BE FLUSH WITH FINISHED GRADE.
 6. ALL JOINTS SHALL BE RESTRAINED, JOINT RESTRAINT DEVICES MAY BE USED AS AN ALTERNATIVE TO THRUST BLOCK WITH ENGINEER'S APPROVAL.
 7. ALL ANCHORS AND THRUST BLOCKS TO BEAR AGAINST UNDISTURBED SOIL.

C411 2" BLOW-OFF INSTALLATION
TYP NOT TO SCALE



- NOTES:**
1. ALL GATE VALVES SHALL BE RESILIENT SEATED GATE VALVES MEETING ANSI/AWWA C509 FOR WATER SUPPLY SERVICE.
 2. CLEAN VALVE BOX OF ALL DEBRIS AND SOIL.
 3. ALL VALVE BOX LIDS TO BE 5 1/4" DROP LIDS. ALL POTABLE WATER VALVE BOX LIDS TO BE STAMPED "WATER" AND ALL NON-POTABLE VALVE BOX LIDS TO BE STAMPED "SEWER".

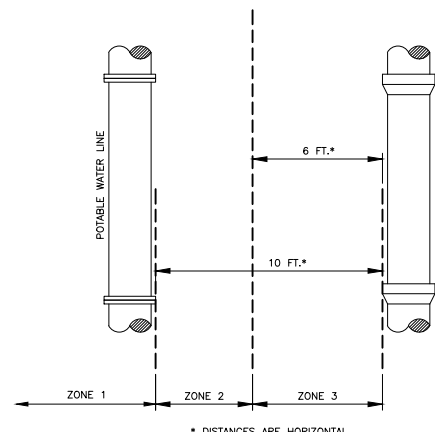
C412 STANDARD VALVE BOX INSTALLATION
TYP NOT TO SCALE



VERTICAL SEPARATION REQUIREMENTS

- ZONE 1: A) WATER AND NPWL MUST BE SEPARATED BY AT LEAST 18" AND B) ONE FULL UNCUT LENGTH OF BOTH PWL AND NPWL PIPE MUST BE CENTERED ON THE CROSSING SO THAT THE JOINTS ARE AS FAR AS POSSIBLE FROM THE CROSSING.
- ZONE 2: A) ONE FULL UNCUT LENGTH OF BOTH PWL AND NPWL PIPE MUST BE CENTERED ON THE CROSSING SO THAT THE JOINTS ARE AS FAR AS POSSIBLE FROM THE CROSSING.
- AND EITHER B) NPWL MUST BE CONSTRUCTED TO WATER MAIN STANDARDS AND PRESSURE TESTED FOR WATER TIGHTNESS FOR A HORIZONTAL DISTANCE OF 10 FEET ON BOTH SIDES OF CROSSING.
- OR C) EITHER THE NPWL OR WATER LINE OR BOTH MUST BE ENCASED WITH A SLEEVING MATERIAL ACCEPTABLE TO DEQ FOR A HORIZONTAL DISTANCE OF 10 FEET ON BOTH SIDES OF THE CROSSING.
- ZONE 3: A) SAME REQUIREMENTS AS ZONE 2 EXCEPT THE NPWL MUST ALSO BE SUPPORTED ABOVE THE CROSSING TO PREVENT SETTLING.
- ZONE 4: A) SAME REQUIREMENTS AS ZONE 1 EXCEPT THE NPWL MUST ALSO BE SUPPORTED ABOVE THE CROSSING TO PREVENT SETTLING.

C414 POTABLE/NOT-POTABLE WATER LINE (NPWL) SEPARATION
TYP NOT TO SCALE

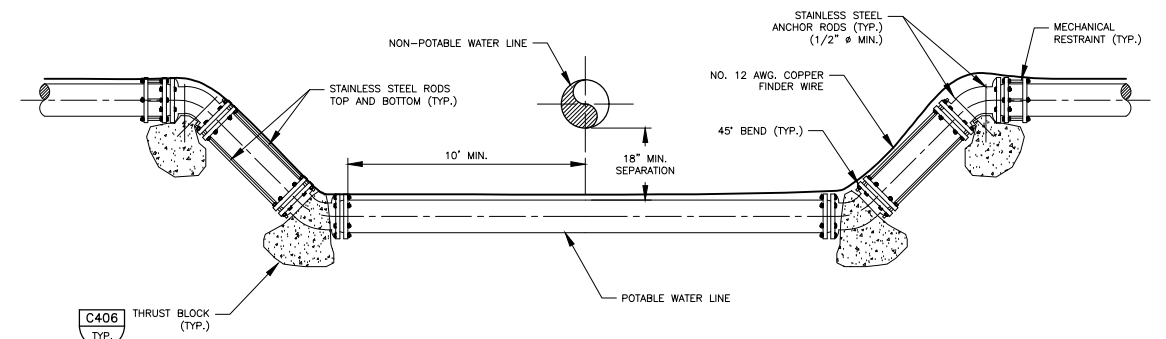


HORIZONTAL SEPARATION REQUIREMENTS

- ZONE 1: A) NO SPECIAL REQUIREMENTS.
- ZONE 2: A) NO SPECIAL REQUIREMENTS FOR POTABLE OR NON-POTABLE SERVICES.
- B) WATER AND NPWL SEPARATED BY AT LEAST 6 FEET AT OUTSIDE WALLS.
- AND C) WATER AT LEAST 18 INCHES HIGHER IN ELEVATION THAN THE NPWL.
- AND EITHER D) NPWL CONSTRUCTED TO WATER MAIN STANDARDS AND PRESSURE TESTED FOR WATER TIGHTNESS.
- OR E) SITE SPECIFIC REQUIREMENTS APPROVED BY DEQ.
- ZONE 3: A) NOT ALLOWED WITHOUT DEQ WAIVER.

- NOTES:**
1. SANITARY SEWAGE FORCE MAINS MUST HAVE MIN. 10' HORIZONTAL SEPARATION AND 18" VERTICAL SEPARATION. ZONE 2 AND ZONE 3 PLACEMENTS ARE NOT ALLOWED WITHOUT A WAIVER GRANTED BY DEQ.

C414 POTABLE/NOT-POTABLE WATER LINE (NPWL) SEPARATION
TYP NOT TO SCALE

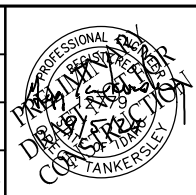


- NOTES:**
1. WRAP BOLTS AND FLANGES WITH 6 MIL. POLYPROPYLENE TO PROTECT FROM CONCRETE ADHERENCE DURING CONSTRUCTION OF THRUST BLOCKS.
 2. REFER TO DETAIL C406 FOR MINIMUM THRUST BLOCKS BEARING AREAS.
 3. ALL CONCRETE SHALL BE MIN. OF 6 CU. FT. AND HAVE A MIN. TWENTY-EIGHT (28) DAY COMPRESSIVE STRENGTH OF NOT LESS THAN 2,500 PSI POURED AGAINST UNDISTURBED EARTH.
 4. THRUST BLOCKING SHALL BE PLACED BETWEEN UNDISTURBED EARTH AND THE FITTING TO BE ANCHORED.
 5. THRUST BLOCKING SHALL BE PLACED SO THAT THE PIPE AND FITTING JOINTS WILL BE ACCESSIBLE TO REPAIRS.
 6. ALL FITTINGS SHALL HAVE A 12"x12"x4" CONCRETE SUPPORT BLOCK.
 7. ALL THRUST BLOCKS CAST IN PLACE UNLESS OTHERWISE NOTED.
 8. ISPEC SD-403 APPLIES WHERE MORE STRINGENT.

C420 TYPICAL WATER LINE LOWERING
TYP NOT TO SCALE

Path: C:\Users\Admin\Crestline\Projects\Dropbox\Clients\Engineers\Dropbox\Clients\Engineers\Projects\MEADOWS SUBDIVISION PHASE 1A\Drawings\C406-15-CivilTypicalDetails.dwg File Name: 24001_GC-15-CivilTypicalDetails.dwg Plot Date: 9/5/2024 4:19 PM Admin

NO.	REVISION	BY	DATE	DESIGN
1.	CITY OF NEW MEADOWS FINAL ENGINEERING SUBMITTAL.	RFP	9/5/2024	RFP
				DRAWN
				LIE
				CHECKED
				AMD
				APPROVED
				GTT

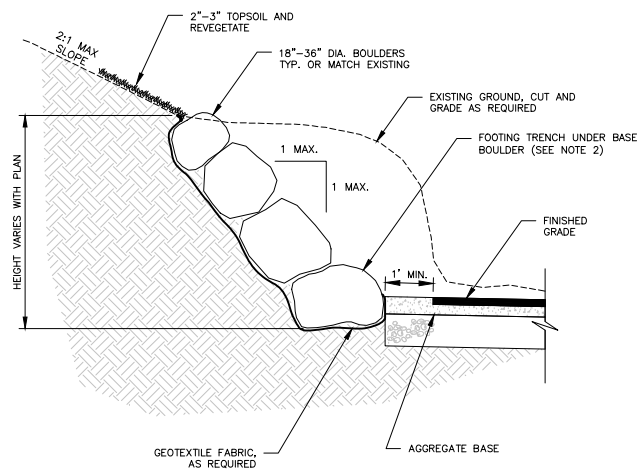


CRESTLINE ENGINEERS
323 DEINHARD LANE, SUITE C · PO BOX 2330
McCALL, IDAHO 83638
208.634.4140 · 208.634.4146 FAX

MEADOWS SUBDIVISION PHASE 1A
NEW MEADOWS, IDAHO
ROADWAY, SANITARY SEWER, DOMESTIC WATER, GRADING,
DRAINAGE, AND STORMWATER IMPROVEMENTS
CIVIL TYPICAL DETAILS - 2

VERIFY SCALE	
BAR IS ONE INCH ON FULL SIZE DRAWING	
PROJECT	24001
DATE	9/5/2024
DRAWING NO.	SHEET NO.
GC-2	13 OF 16

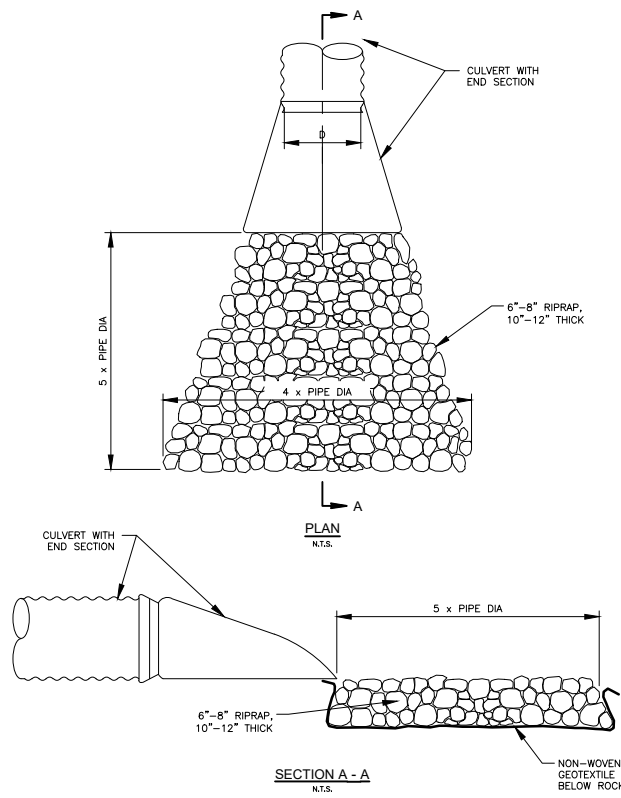
Path: C:\Users\Admin\Crestline Engineers\Dropbox\Crestline Engineers\Office\Crestline Engineers\1001\RRRA\ConstructionManagement\24001\Civil\Drawings\CD24001_GC-1-5_CivilTypicalDetails.dwg File Name: 24001_GC-1-5_CivilTypicalDetails.dwg Plot Date: 9/5/2024 4:19 PM Admin



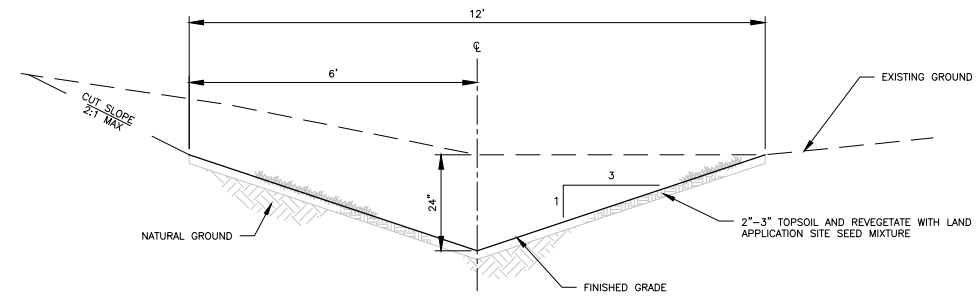
NOTES:

1. PLACE LARGEST ROCKS IN FOOTING TRENCH WITH THEIR LONGITUDINAL AXIS NORMAL TO THE EMBANKMENT FACE. ARRANGE SUBSEQUENT ROCK LAYERS SO THAT EACH ROCK ABOVE THE FOUNDATION COURSE HAS A THREE-POINT BEARING ON THE UNDERLYING ROCKS.
2. FOOTING UNDER BASE BOULDER TO BE ONE-HALF (1/2) BASE DIAMETER OR ONE (1') FOOT WHICHEVER IS GREATER.
3. OBTAIN FILL MATERIAL FROM THE SLOPE AND PLACE IT BEHIND THE ROCK WALL. SLOPE ABOVE THE WALL SHOULD BE MAINTAINED AT 2:1 OR LESS WITH A SLOPEBENCH AT THE TOE. BACKFILL THE FOOTING TRENCH WITH EXCAVATED MATERIAL IN-BETWEEN THE BOULDERS.
4. BASE COURSE MAY BE REQUIRED IF NATIVE MATERIAL IS NOT SUITABLE, AS DETERMINED BY GEOTECHNICAL EVALUATION.
5. DRAIN PIPES MAY BE REQUIRED WITH THE BASE DEPENDING ON THE PERMEABILITY OF THE SUBGRADE SOIL. VERIFY DRAINAGE NEEDS WITH A GEOTECHNICAL EVALUATION.

1004 BOULDER SLOPE STABILIZATION
TYP NOT TO SCALE



C1230 OUTLET PROTECTION
TYP NOT TO SCALE

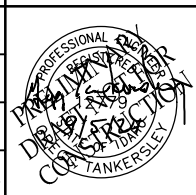


NOTES:

1. REFER TO IDAHO DEPARTMENT OF ENVIRONMENTAL QUALITY'S CATALOG OF STORMWATER BEST MANAGEMENT PRACTICES, VOLUME 4, SECTION 3, BMP 1 AT WWW.DEQ.IDAHO.GOV/MEDIA/622263-STORMWATER.PDF FOR ADDITIONAL INFORMATION.

C1401 BIOFILTRATION SWALE (VEGETATED SWALE)
TYP NOT TO SCALE

NO.	REVISION	BY	DATE	DESIGN
1.	CITY OF NEW MEADOWS FINAL ENGINEERING SUBMITTAL.	RFP	9/5/2024	RFP
				DRAWN LJE
				CHECKED AMD
				APPROVED GTT



CRESTLINE ENGINEERS
323 DEINHARD LANE, SUITE C · PO BOX 2330
McCALL, IDAHO 83638
208.634.4140 · 208.634.4146 FAX

MEADOWS SUBDIVISION PHASE 1A
NEW MEADOWS, IDAHO
ROADWAY, SANITARY SEWER, DOMESTIC WATER, GRADING,
DRAINAGE, AND STORMWATER IMPROVEMENTS
CIVIL TYPICAL DETAILS - 5

VERIFY SCALE	
BAR IS ONE INCH ON FULL SIZE DRAWING	
PROJECT	24001
DATE	9/5/2024
DRAWING NO.	SHEET NO.
GC-5	16 OF 16